

Job Description

PASTOR OF SENDING

SOJOURN MIDTOWN

Mission Connection

The primary role of the Pastor of Sending is to provide leadership and vision to the sending (missions) ministries of Sojourn Church Midtown. This includes oversight of local mercy ministries, domestic church planting, and international missions. The Pastor of Sending will also play an active role on the Local Management Team of elders and the full council of elders providing overall leadership to the church.

Responsibilities

International Missions

- Provide overall leadership and vision to the international missions ministry.
- Maintain and enrich the global sending processes of Midtown including identification, assessment, development, advocacy, missionary care, field partnership, and reentry.
- Provide relational presence and pastoral care for international missionaries sent from Midtown.
- Provide vision and leadership to the short and mid-term trip ministry in collaboration with the Associate Director of International Missions.
- Help develop the international student and refugee ministry engagement
- within the city of Louisville.
- Regularly travel to visit Midtown missionaries overseas and assist in global projects. A minimum of 2 international trips a year is expected.
- Maintain relationships with key sending organizations (IMB, Serge, Pioneers, Upstream, etc.)

Church Planting

- Provide overall leadership to the church planting ministry in collaboration with a designated team of Sojourn Midtown elders.
- Provide oversight to the church planting residency along with the Associate Director of Church Planting.
- Travel as needed to visit Midtown church planters and attend church planting events.
- Maintain relationships with key church planting networks and organizations with the priority relationship being Harbor Network.

Mercy (Local Mission)

- Provide leadership and vision to the mercy ministry in collaboration with the Director of Mercy. This includes local ministry in the city but is specifically focused on the church's neighborhood (Shelby Park), benevolence cases, and the adoption and foster care ministry.
- Be regularly present at mercy events and ministries.

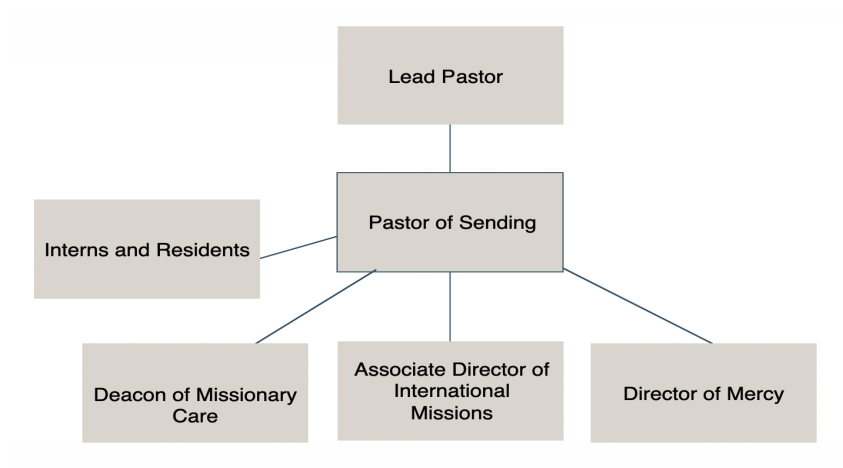
Additional Responsibilities

- Carry out the regular responsibilities of a member of the Full Council of Elders.
- Play an active role on the Local Management Team, the team of leaders that oversees the ministry departments of the church.
- Be a man regularly in the Word and active in prayer.
- Be present and engaged on Sundays during services.
- Read, write, and stay informed in the areas of missiology, church planting, leadership, theology, and pressing cultural issues

Character and Competencies

- Exemplify the qualifications of a pastor in 1 Timothy 3 and Titus 1.
- Fulfill the duties required of Sojourn Midtown members as outlined in the membership covenant.
- Be a person of character that leads out of a dependent relationship with God.
- Be a high capacity person, able to handle a large diversity of details and projects, in an ever-changing environment.
- Be a self-starter with follow-through ability who is committed to growing and empowering other leaders.
- Must maintain confidentiality related to sensitive information.

Reporting and Supervising Roles



Expectations

- 40+ hours per week
- Adhere to the *Sojourn Staff Handbook*
- 40 hours per week

Classifications

- Category: Full-time
- Pay: Salary