

Job Description

Director of Student Ministries

Sojourn Midtown

Vision Connection

The purpose of the Sojourn Student Ministry (S2) is to reach high school and middle school students with the gospel, build them up to be more like Christ, and send them into the world as gospel witnesses.

Responsibilities

Cultivate relationships with students & families in our church & city

- Know and be known by Sojourn families with students in the ministry.
- Provide resources and support for families as they disciple their student(s).
- Create intentional transition pathways for students entering and exiting the ministry (i.e. new students, 6th graders, 12th graders).
- Be present in local schools, striving to be involved/present at student activities and developing relationships with key leaders (i.e. coaches, teachers, principals, etc).
- Establish relationships with students' families in Shelby Park, seeking to be a church leader they know, love, and trust.

Lead Weekly S2 Gatherings

- Cultivate gatherings where a student hears the gospel and discovers what it means to follow Jesus and live in community.
- Facilitate the teaching schedule and content, the volunteer worship team, and the activities and games of the large group gathering.
- Coordinate the leader guided discussions of the small groups.
- Ensure that weekly gatherings are a safe, supervised, welcoming, and compelling space for believing and unbelieving students.

Direct the Adult Volunteer Leader Team

- Recruit and vet members from Sojourn Midtown to serve in S2.
- Train and equip the leaders to faithfully and fruitfully disciple students in the small group setting and outside the weekly gathering.
- Establish a healthy, joyful, and unified culture within the adult leader team.
- Maintain the vision, mission, and strategy alignment of S2 with leaders.

Schedule and Facilitate the Annual Ministry Programming

- Plan and facilitate outreach events designed to welcome students exploring the faith and creating a context for students to invite unbelieving friends.
- Plan and facilitate high school weekend retreats and middle school day retreats to foster growth and depth in student's faith.
- Design various local outreach projects and mission trips to cultivate the students' hearts for the least and the lost.
- Conduct fundraisers for retreats and other activities.

Maintain Consistent Communication about the Ministry

- Maintain vision and event promotion by sending the monthly parent email and promoting S2 through social media.
- Work with the Communication Director to ensure S2 ministry needs and announcements are consistently communicated through regular outlets such as the Midtown weekly email, Sunday announcements, and the Sojourn website.

Character and Competencies

- Fulfills the character qualifications of a deacon as outlined in Scripture (1 Tim. 3:8-13) and the Sojourn Constitution.
- Embodies the six Midtown values and five Midtown staff values.
- Fulfill the duties required of Sojourn Midtown members as outlined in the membership covenant.
- Possesses a call to evangelize, disciple, and equip students in the gospel.
- Relationally gifted; able to network and connect with a diverse group of ages, ethnicities, and backgrounds.
- Experience in and passion for student ministry in an urban context.
- Strong recruiting and developing skills; is able to build a healthy team of volunteers
- Demonstrates the desire and ability to work both as a self-starter and within a team environment.
- High capacity leader; able to handle a large diversity of details and projects in an ever-changing environment.
- Familiarity with Google suite.

Desired Outcomes

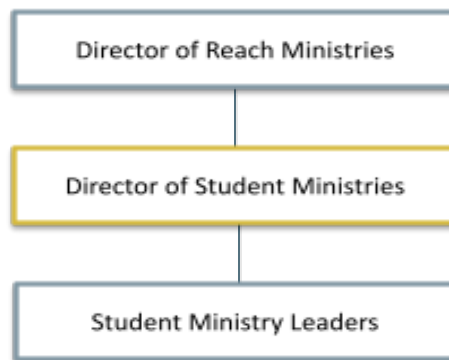
- Midtown parents recognize the Student Ministry at Midtown as a gospel centered support to the discipleship of their student.
- Each year, the Student Ministry at Midtown grows in ethnic diversity of students and leaders.
- A majority of students in the ministry professed faith in Christ and moved towards baptism before eighth grade.
- Every student has at least one leader and one student friend from the ministry.
- Each believing student has personally shared the gospel with another person at least twice a year.
- Each believing student has led one person to profess faith in Christ before transitioning out of the ministry.
- Each student will grow in their biblical competencies, theological foundations, and character formation.

Expectations

- Maintain a high level of professionalism in communication and organization.
- Regular meetings with the Director of Reach Ministries.
- Presence at all Midtown staff meetings.
- Presence at quarterly Member Meetings.
- Regular participation in Sunday services.

Reporting and Supervising Roles

The Director of Student Ministries will report to the Director of Reach Ministries.



Classifications

- Category: Full-Time
- Full Sojourn Midtown employee
- Minimum of 3 year commitment